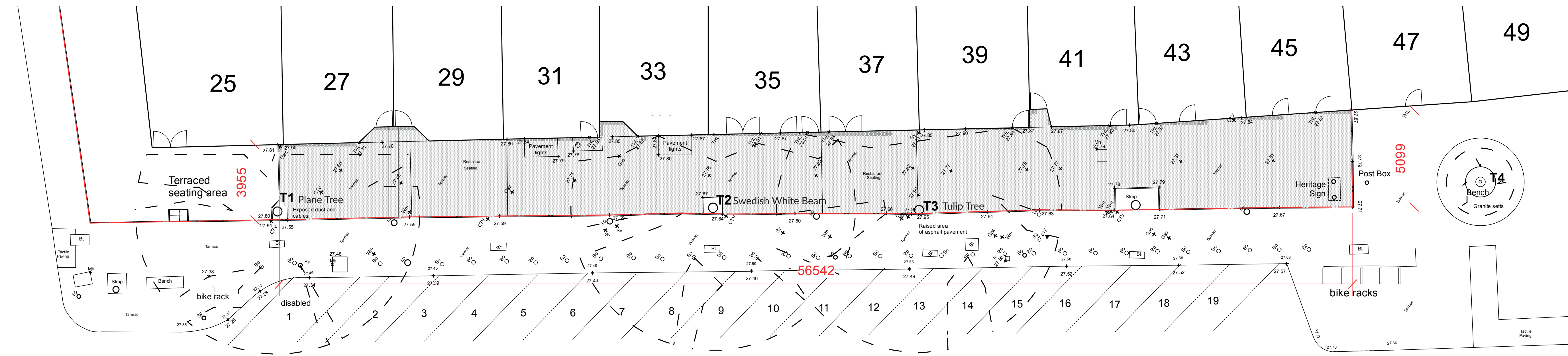


North Dulwich Parade

The Dulwich Estate is planning improvements to the paved area in front of 27-45 Dulwich Village (North Dulwich Parade). We hope to create a pedestrian area which invites people to visit, spend time here and support local traders and which further enhances the Village atmosphere. Plans include installing new benches, planting additional trees and providing new planters as well as resurfacing works. All details are outlined here, subject to planning permission.

We welcome your feedback and comments at
info@thedulwichestate.org.uk

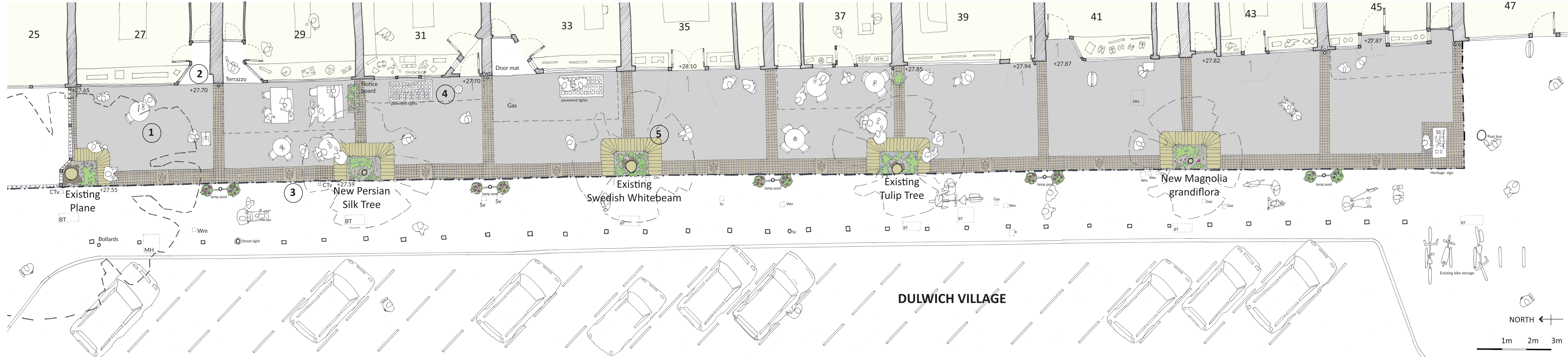
Existing plan



KEY

	Dulwich Estate land boundary
	Asphalt surface
Ic	Inspection Chamber
Elec	Electric meter
Sv	Stop Valve
Wm	Water main
Bt	British Telecom
Gas	Gas
CTV	Cable TV
TW	Thames Water
Mh	Manhole
Stmp	Tree Stump
Sp	Sign Post
Lp	Lamp Post
THL	Threshold level
TL	Traffic light
Gy	Gully

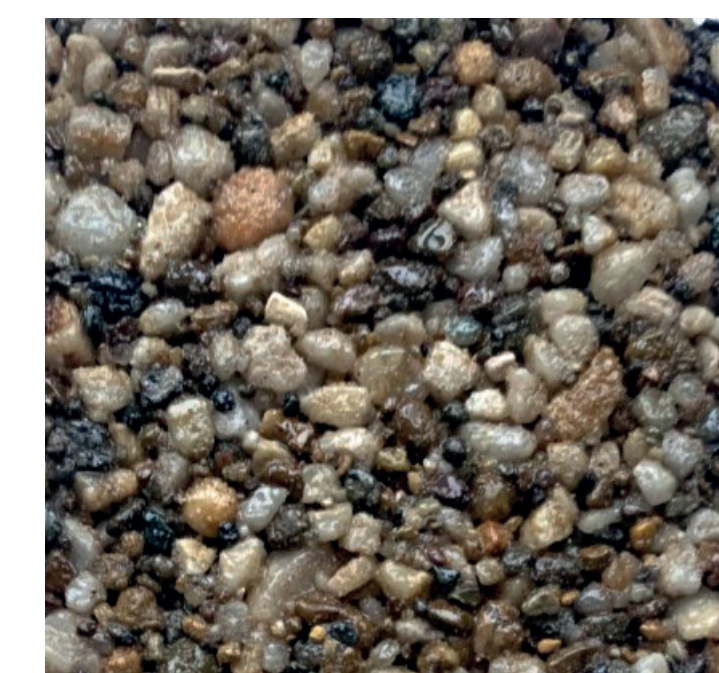
Proposed plan



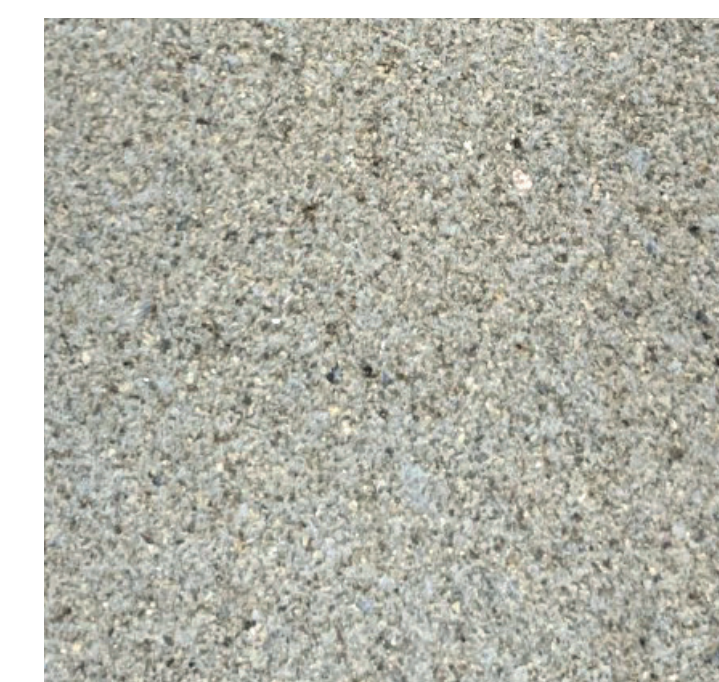
Artist's view - South

1

New surface materials



Resin bound stone is frequently used in heritage settings. This would replace the asphalt with a high quality durable surface.



Honey/ grey coloured stone and granite bands form routes for services and cables.

2

Level thresholds to door ways



The new surface will need to be level with the Local Authority owned pavement and shop door thresholds.



The improvements are planned to Dulwich Estate land which ends at the kerb stones.

3

Stone details



Architectural details include honey/ grey coloured stone paviours carved with Edward Alleyn's crest, a feature of the Dulwich Estate for over 400 years.



Granite setts as seen near Rumsey Pharmacy could be matched to create consistency.

4

Retain historic details



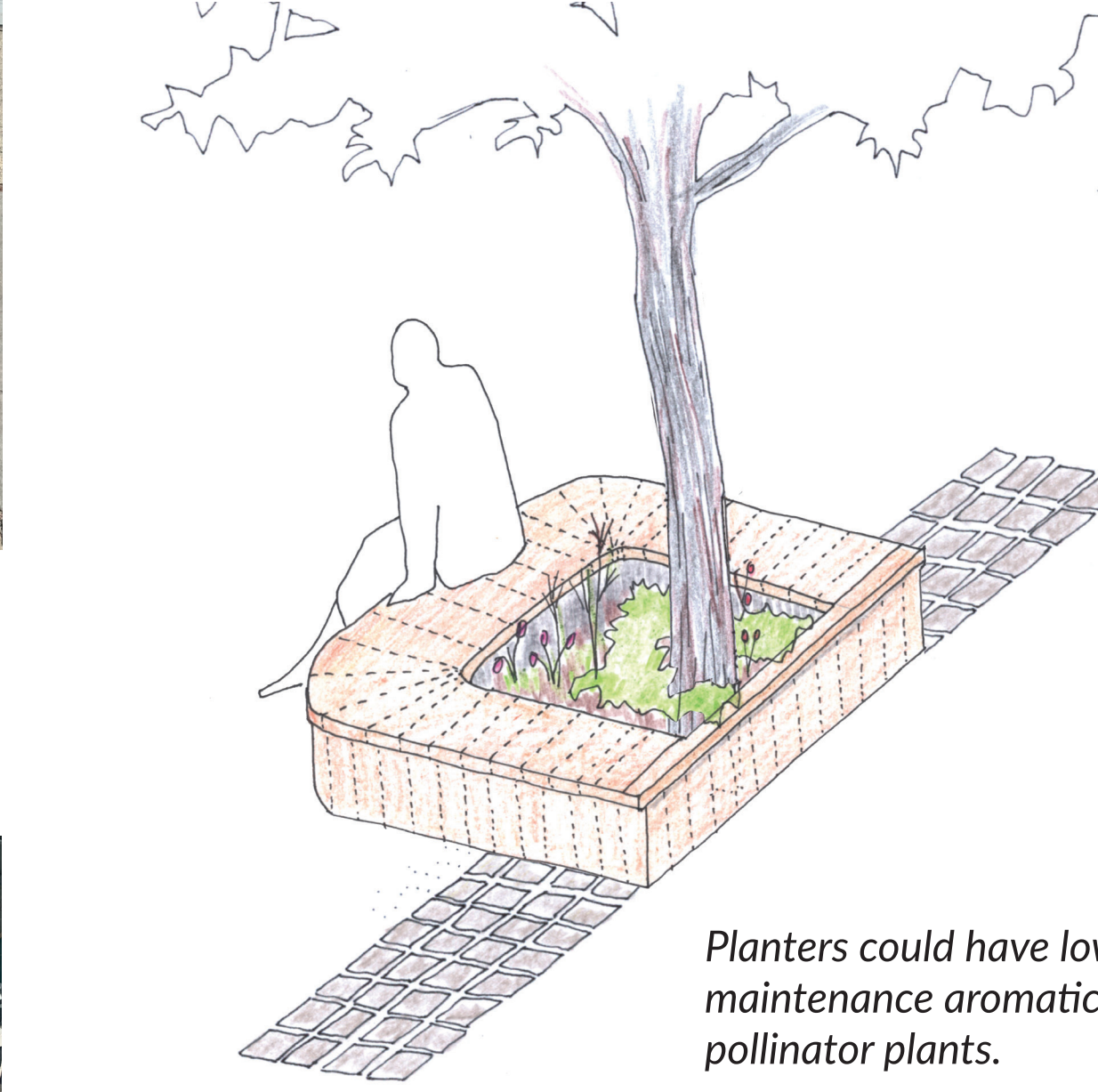
The Victorian coal-chute cover outside Green's toy shop and the basement 'pavement lights' will be retained.



Pavement lights above a light-well.

5

New seating, new and existing trees in root protected tree-pits and new planting



Planters could have low maintenance aromatic pollinator plants.



Artist's view - North